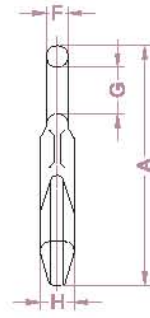
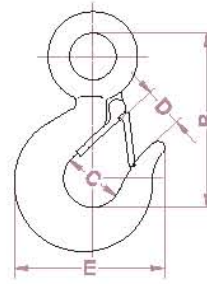


# CARBON STEEL EYE HOOK

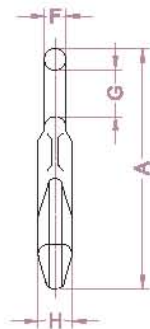
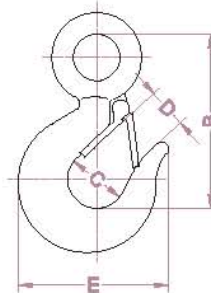


## SPECIFICATION

Product Code	Size (ton)	SWL (WLL) (ton)	Dimension (mm)								Weight (kg)
			A	B	C	D	E	F	G	H	
HKEC-001	3/4	0.75	113	82	31	21	72	9.5	19	14	0.3
HKEC-002	1	1	128	93	33	22	81	11	22	17	0.4
HKEC-003	1.5	1.5	144	104	36	23	91	12	28	20	0.7
HKEC-004	2	2	166	117	37	27	99	15	31	23	0.9
HKEC-005	3	3	202	147	48	34	123	17.5	40	29	1.7
HKEC-006	5	5	259	187	60	41	166	23	50	35	3.7
HKEC-007	7.5	7.5	316	230	76	53	203	28.5	62	43	5.8

- **Material**\_ Forged carbon steel
- **Test Load**\_ Proof Load = SWL(WLL)×2.5, Breaking Load = SWL(WLL)×5
- **Surface**\_ Electro galvanized

# ALLOY STEEL EYE HOOK



## SPECIFICATION

Product Code	Size (ton)	SWL (WLL) (ton)	Dimension (mm)								Weight (kg)
			A	B	C	D	E	F	G	H	
HKEA-001	3	3	166	117	37	27	99	15	31	23	0.9
HKEA-002	4.5	4.5	202	147	48	34	123	17.5	40	29	1.7
HKEA-003	7	7	259	187	60	41	166	23	50	35	3.7
HKEA-004	11	11	316	230	76	53	203	28.5	62	43	5.8

- **Material**\_ Forged alloy steel
- **Test Load**\_ Proof Load = SWL(WLL)×2.5, Breaking Load = SWL(WLL)×5
- **Surface**\_ Painting (Orange painted)